

anti-Human LRP/MVP Antibody

Product Data Sheet



www.biomosaics.com

802•656•5443

05445

Bldg. C. Burlington, VT
655 Spear St.,

Clone 1032 Monoclonal Antibody to Human Lung-Resistance Related Protein; Major Vault Protein

Clone 1032 recognizes a protein of 104kDa-110kDa, characterized as major vault protein (MVP). MVP is identical to lung-resistance related protein (LRP). Vaults are large ribonucleoprotein particles (RNPs) present in all eukaryotic cells. They have a complex morphology, including several small molecules of RNA, but a single protein species. The MVP accounts for >70% of their mass. Their shape is reminiscent of the nucleopore central plug. Amino acid 241-280 of human estrogen receptor (ER) is mapped to be the site of interaction between ER and MVP. Treatment of cells with estradiol increases the amount of MVP in nuclear extract. Anti-estrogen 1C1182 shows no effect. The hormone-dependent interaction of vaults with ER is prevented *in vitro* by sodium molybdate. Antibodies to progesterone and glucocorticoid receptors are also able to co-immunoprecipitate the MVP. LRP is a protein overexpressed in many neoplastic tissues and cell lines. Expression of LRP predicts a poor response to chemotherapy.

IMMUNOGEN

Hybridoma produced by the fusion of splenocytes from mice immunized with immunoprecipitated protein from phosphocellulose column flow through of extract of human breast cancer MCF-7 cells and mouse myeloma Sp2/0-Ag14 cells.

SHIP CONDITIONS

Ship at ambient temperature, freeze upon arrival.

STORAGE

Product should be stored at -20°C. Aliquot to avoid freeze/thaw cycles.

STABILITY

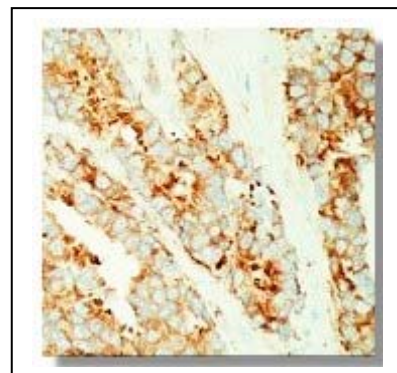
Products are stable for one (1) year from purchase when stored properly.

References:

1. Herrmann C, et al: Major vault protein of electric ray is a phosphoprotein. *Neurochem Res* 1998 Jan;23(1):39-46.
2. Hamill DR, Suprenant KA: Characterization of the sea urchin major vault protein: a possible role for vault ribonucleoprotein particles in nucleocytoplasmic transport. *Dev Biol* 1997;190(1):117-128.
3. Izquierdo MA, et al: Broad distribution of the multidrug resistance-related vault lung resistance protein in normal human tissues and tumors. *Am J Pathol* 1996 Mar;148(3):877-887.

Ordering Information

| | |
|------------------------|---|
| Catalog # - | B1355M |
| Size - | 100 microgram |
| Form - | monoclonal |
| Host/Clone - | Mouse/1032 |
| Formulation - | Phosphate buffered saline with 0.08% sodium azide |
| Concentration - | 1 mg/ml |
| Isotype - | IgG1 |
| Application - | IHC, Western blot, Flow Cytometry |



Legend:

Immunohistochemical staining using LRP/MVP antibody on formalin fixed, paraffin embedded human breast carcinoma.

For research use only