

# anti-human TCF-1 antibody

## anti-T Cell Factor 1 monoclonal antibody 7H3



655 Spear St., Bldg. C. Burlington, VT 05445 802•656•5443 www.biomosaics.com

### BACKGROUND

TCF 1 (T cell factor 1) is a member of the TCF/LEF (lymphoid enhancer factor) family of transcription factors. Members of this family along with  $\beta$  catenin, are involved in mediating Wnt signaling by transactivating downstream genes. TCF 1 is closely related to LEF-1, both of which are transcription factors expressed in mice during T cell differentiation. They regulate the T cell receptor  $\alpha$  enhancer in transfections assays. TCF 1 becomes transcriptionally active through interaction with  $\beta$  catenin. Also, numerous splice variants of TCF 1 have been identified. Overexpression of TCF-1-specific splice forms appears to correlate with the metastatic behavior of colorectal cancer cells and with overproduction of lymphoid tyrosine protein kinase p56(lck).

### IMMUNOGEN

Hybridoma produced by the fusion of splenocytes from mice immunized with recombinant protein corresponding to amino acids 102-269 from the human TCF1A splice variant protein fused to maltose binding protein (MBP)

### SHIP CONDITIONS

Ship at ambient temperature, freeze upon arrival.

### STORAGE

Product should be stored at  $-20^{\circ}\text{C}$ . Aliquot to avoid freeze/thaw cycles.

### STABILITY

Products are stable for one (1) year from purchase when stored properly.

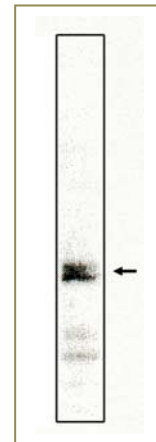
### References:

1. Staal, F.J., et al. "Tcf-1-mediated transcription in T lymphocytes: differential role for glycogen synthase kinase-3 in fibroblasts and T cells." *Int. Immunol.* 1999, 11, 317-323
2. Mayer, K., et al. "Ectopic activation of lymphoid high mobility group-box transcription factor TCF-1 and overexpression in colorectal cancer cells." *Int. J. Cancer* 1997, 72, 625-630
3. Castrop, K., et al. "The human TCF-1 gene encodes a nuclear DNA-binding protein uniquely expressed in normal and neoplastic T-linkage lymphocytes." *Blood* 1995, 86, 3050-3059

## Product Data Sheet

### Ordering Information

<b>Catalog # -</b>	B1072M
<b>Size -</b>	100 microgram
<b>Form -</b>	Unconjugated
<b>Host/Clone -</b>	Mouse/7H3
<b>Formulation -</b>	0.1M tris-glycine, 0.15M NaCl, 30% glycerol, 0.08% sodium azide
<b>Concentration -</b>	1 mg/ml
<b>Isotype -</b>	IgG
<b>Application -</b>	Western Blot, IHC, ELISA



### Legend:

Western blot analysis using anti-TCF-1 clone 7H3 antibody at 1  $\mu\text{g}/\text{ml}$  on Jurkat cell lysates.

For research use only